

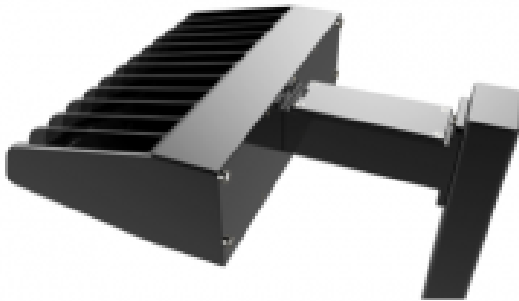


DATE	
PROJECT	
TYPE	
NOTE	
PREPARED BY	

VL-ALAS

LED Shoebox

The energy efficient LED light fixture, **VL-ALAS** is durable, reliant and provides powerful luminosity. It is ideal for: car dealerships, parking garages, school campuses, industrial/commercial spaces, and recreational parks. The **VL-ALAS** offers competitive pricing and includes a 3 year warranty.



FEATURES

- Starting Temperature: -40°C
- CRI: 70+
- UL & CUL listed for wet locations
- IP rating: IP65
- Driver: Constant current, 120~277V
- Operating life: >100,000 hours

OPTIONS

- (PM) Pole mount
- (SF) Slip fitter

CONSTRUCTION

- Die-cast aluminum body
- Polycarbonate lens
- Powder coat black finish (standard)



MODEL #	INPUT POWER	LUMEN OUTPUT	SCOTOPIC	COLOR TEMP (CCT)	CRI	RATED LIFE (L70)	INPUT VOLTAGE	INPUT FREQUENCY
VL-ALAS-35LED	35W	4,900	8,085	5000K	70+	>100,000	120~277V	50/60Hz
VL-ALAS-50LED	50W	7,000	11,550	5000K	70+	>100,000	120~277V	50/60Hz
VL-ALAS-80LED	80W	11,000	18,150	5000K	70+	>100,000	120~277V	50/60Hz
VL-ALAS-100LED	100W	12,212	20,150	5000K	70+	>100,000	120~277V	50/60Hz
VL-ALAS-120LED	120W	15,700	25,905	5000K	70+	>100,000	120~277V	50/60Hz
VL-ALAS-150LED	150W	19,500	32,175	5000K	70+	>100,000	120~277V	50/60Hz

Ordering Guide

Example: VL-ALAS-150LED-50-MV-BLK-PM

VL-ALAS					
MODEL	WATTS	COLOR TEMP	VOLTAGE	FINISH	OPTIONS
VL-ALAS	35W-35LED 50W-50LED 80W-80LED 100W-100LED 120W-120LED 150W-150LED	50-5000K	MV=120~277V	BLK-BLACK	ADD'L COST (PM) POLE MOUNT (SF) SLIP FITTER

Dimensions

