

AURORA

Architectural LED lighting

DESIGN - QUALITY



Crystal 
Lighting

AURORA LED, is ideal for locations such as Residential, Walkways, Perimeters, School Campuses, Industrial/Commercial Spaces, and any other Outdoor setting that is looking to create an inviting and sophisticated atmosphere. **AURORA** Has a Wide Light Distribution.

-10 year/100,000 hour limited warranty .



FEATURES

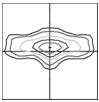
- Energy Savings: Over 66% compared to HID light sources
- Improved lumen maintenance
- Utilizes high efficient Lumiled LED's
- Operating temperatures: -30°C ~ 60°C
- 10Kv Surge Protector. (standard)
- IP-66 Rated
- 0-10 Dimming, Occupancy Sensors, Photo Cell and Wireless Controls (Optional)

CONSTRUCTION.

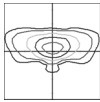
- Cast Top / Shade is Heavy-Gauge Spun Aluminum.
- 3 Mils Powder coat finish
- Clear Optic System (Standard)
- Silicone gasket to prevent leakage and provide weather-tight protection.



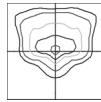
OPTIC DISTRIBUTION



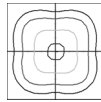
TYPE 2 (T2)



TYPE 3 (T3)



TYPE 4 (T4)



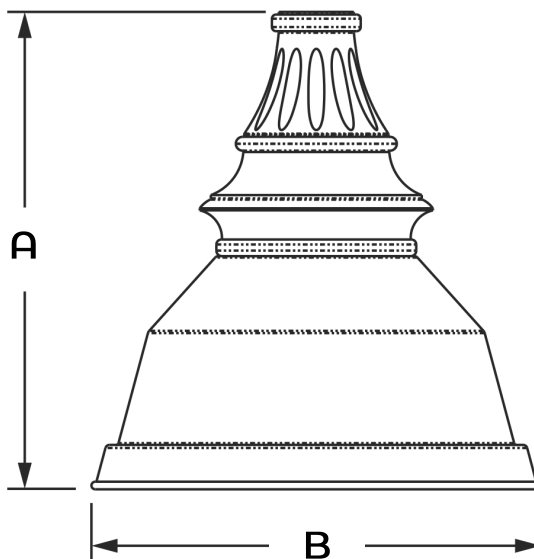
TYPE 5 (T5)

Example: (AUR-SH1-T5-40CLED-30K-MV-BLK-OCC)

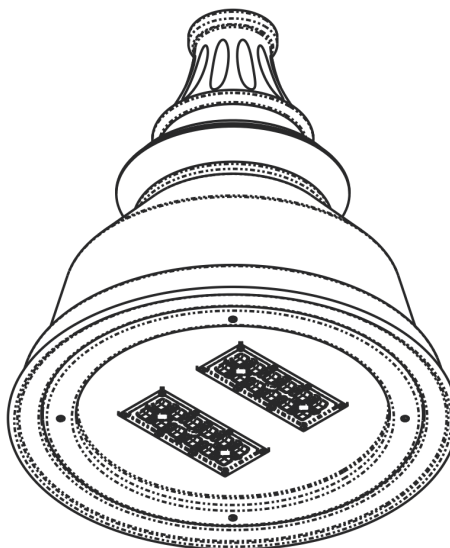


Cat #	Shade	Light dist.	Wattage	Color Temp.	Voltage	Color	Mounting	Options
AURORA (AUR)	SHADE 1 (SH1)	TYPE 2 (T2)	40W (40CLED)	3000K (30K)	120-277V (MV)	BLACK (BLK)	ARM mount (AM)	CLEAR FLAT LENS (CFL)
		TYPE 3 (T3)	50W (50CLED)	4000K (40K)	480V (HV)	WHITE (WH)		OCCUPANCY SENSOR (OCS)
		TYPE 4 (T4)	60W (60CLED)	5000K (50K)		BRONZE (BRZ)		BUTTON PHOTO CELL (PC)
		TYPE 5 (T5)	80W (80CLED)			SILVER (SIL)		WIRELESS CONTROL (WC)
			100W (100CLED)			GRAPHITE (GPH)		HOUSE SIDE SHIELDS (HSS)
			120W (120CLED)			MARINE GRADE (MG)		WATTAGE ADJUSTER (WA)
			150W (150CLED)					

Dimensions		
CAT#	A	B
AUR-AM	21" 1/2	20" 1/4



EPA	
CAT#	EPA
AUR-AM	1.6



Cat #	Input Power	Lumen Output	LPW	Color Temp. (CCT)	CRI	Rated Life (L70)	Input Voltage	Input Frequency	HID Equivalent
AUR-40CLED	45W	6,492	162	5000K	70+	>200,000	120-277V	50/60HZ	70w HPS
AUR-50CLED	55W	7,780	155	5000K	70+	>200,000	120-277V	50/60HZ	100w MH
AUR-60CLED	65W	8,256	137	5000K	70+	>200,000	120-277V	50/60HZ	150w PSMH
AUR-80CLED	85W	10,841	135	5000K	70+	>200,000	120-277V	50/60HZ	175w HPS
AUR-100CLED	105W	15,560	155	5000K	70+	>200,000	120-277V	50/60HZ	250w PSMH
AUR-120CLED	125W	16,512	137	5000K	70+	>200,000	120-277V	50/60HZ	310w HPS
AUR-150CLED	155W	23,340	155	5000K	70+	>200,000	120-277V	50/60HZ	400w PSMH



Crystal Lighting Corp.
13182 Flores St,
Santa Fe Springs, CA 90670
Ph: 562-944-0223
Fax: 562-944-0225
www.crystallighting.us

All products are proudly manufactured and/or assembled in the USA