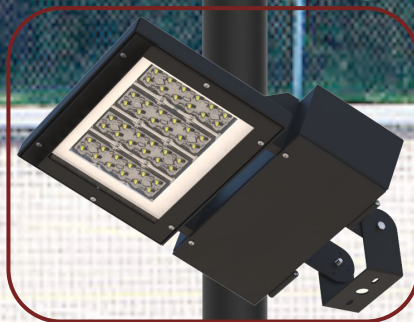


# CLP-330FAL Series

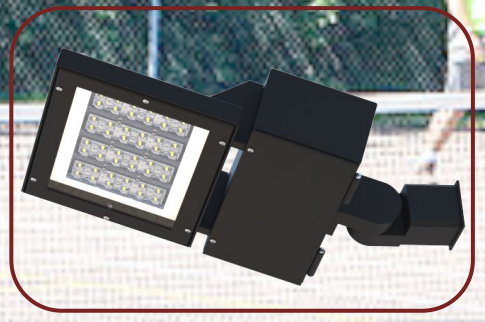
L&D Flood/Area Light Fixture  
DESIGN - QUALITY



ARM MOUNT



SMALL SWIVEL BRACKET



SLIP FITTER



**Crystal**   
**Lighting**



We continue to manufacture our fixtures in our Santa Fe Springs, CA. Location. , In addition to building our housings we have also started to build our core LED arrays to have better Quality Control of our products in turn shortening production time. Crystal Lighting has one of the best delivery times in the industry considering that most of our orders are built to order.

CLP-330FALL has a wide light distribution and 10years warranty or 100,000 hour limited .

BAA and ARRA compliant



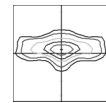
**FEATURES**

- Energy Savings: Over 66% compared to HID light sources
- Improved lumen maintenance
- Utilizes high efficient Lumiled LED's
- Operating temperatures: -30°C ~ 60°C
- Driver: Constant current, 120-277v, 50/60Hz, 480v (Optional)
- 0-10 Dimming
- 10KV Surge Protector (Standard)
- Suitable for wet locations
- Operating Life: >60,000 hours

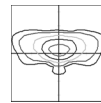
**CONSTRUCTION**

- Housing is Heavy-Gauge Aluminum.
- 1/2" Plugs with O-rings for Conduit, Sensors or Photo Cell.
- 3 Mill Powder Coat Finish.
- Clear Silicone Optics.
- Silicone Gasket
- Mounting: Pole Mount Arm or Wall Mount.

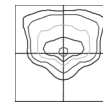
**OPTIC DISTRIBUTION**



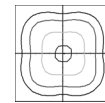
TYPE 2 (T2)



TYPE 3 (T3)



TYPE 4 (T4)



TYPE 5 (T5)

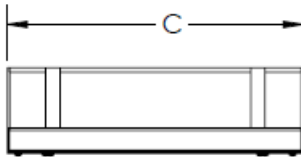
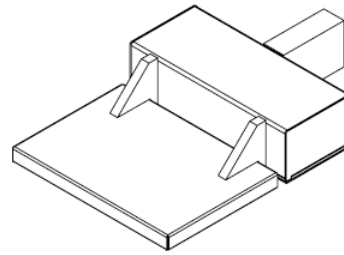
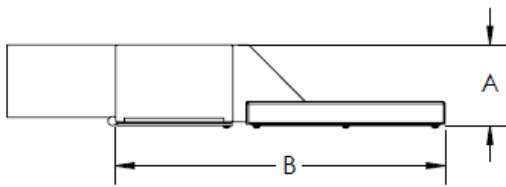
Example: (CLP-330FAL-S-20CLED-T5-30K-MV-BLK-EA6



PHILIPS LUMILEDS

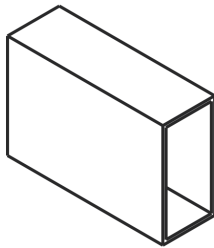


CAT #	WATTS	LIGHT DIST.	KELVIN	VOLTAGE	FINISH	MOUNTING	OPTIONS
CLP-330FAL-S	20W-20CLED 30W-30CLED 40W-40CLED 60W-60CLED	TYPE 2 (T2)	2700K (27)	MULTI-VOLT (MV)	BRONZE (BZ)	ARM MOUNT	MOTION SENSOR (OCC)
CLP-330FAL-M	80W-80CLED 100W-100CLED 120W-120CLED 150W-150CLED	TYPE 3 (T3)	3000K (30)	480V (HV)	GRAY (GRY)	6" EXTRUDED ARM (AE6)	BUTTON PHOTO CELL (PC)
CLP-330FAL-L	200W-200CLED 250W-250CLED 300W-300CLED	TYPE 4 (T4)	3500K (35)		BLACK (BLK)	10" EXTRUDED ARM (AE10)	5PIN PHOTO CELL (5PC)
		TYPE 5 (T5)	4000K (40)		WHITE (WH)	SLIP FITTER (SF)	7PIN PHOTO CELL (7PC)
			5000K (50)		CUSTOM (CST)	SWIVEL BRACKET (SB)	EMR. BATTERY (EMR)
			5700K (57)			LARGE YOKE MOUNT (LYM)	WIRELESS CONTROL (WC)
			6500K (65)			6" EXTRUDED ARM WALL MOUNT (6EAWM)	WATTAGE ADJUSTER (WA)

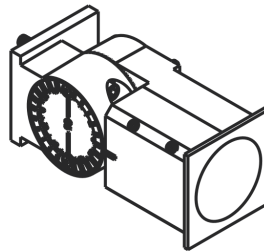


Dimensions				
CAT#	A	B	C	EPA
CLP-330FAL-S	5" 1/8	15" 1/2	12"	.6
CLP-330FAL-M	5" 1/8	16" 1/4	15" 3/4	.8
CLP-330FAL-L	5" 1/8	23" 1/2	20" 3/4	1.0

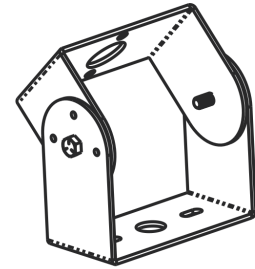
**MOUNTING OPTIONS**



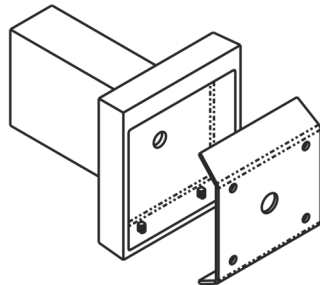
ARM MOUNT 6",10" and 12"



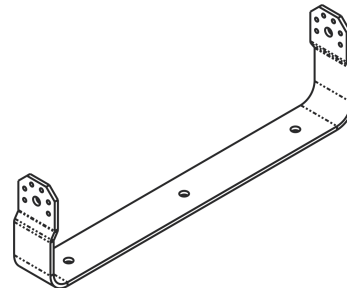
SLIP FILTER



SMALL SWIVEL BRACKET



6" WALL MOUNT ARM

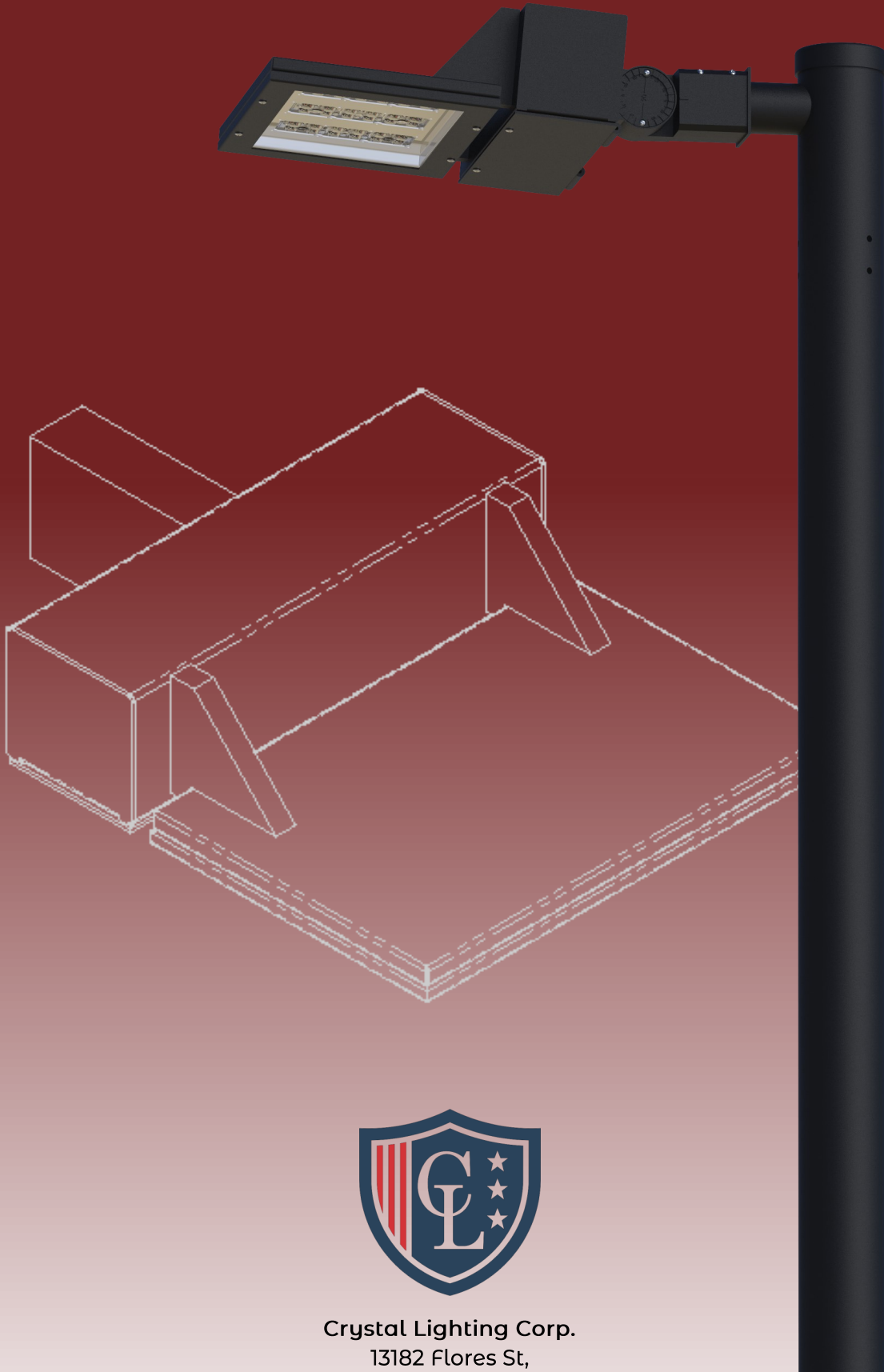


LARGE YOKE MOUNT

CAT#:	INPUT POWER	LUMEN OUTPUT	Lms/W	COLOR-TEMP (CCT)	CRI	RATED LIFE (L70)	INPUT VOLTAGE	INPUT FREQUENCY	HID Equivalent
CLP-330FAL-SM-20CLED	25W	3,650	146	5000K	70+	>200,000	120-277V	50/60HZ	100w MH
CLP-330FAL-SM-30CLED	35W	5,222	149	5000K	70+	>200,000	120-277V	50/60HZ	150w MH
CLP-330FAL-SM-40CLED	45W	6,420	162	5000K	70+	>200,000	120-277V	50/60HZ	175w MH
CLP-330FAL-SM-60CLED	65W	8,539	142	5000K	70+	>200,000	120-277V	50/60HZ	175w MH
CLP-330FAL-MD-80CLED	85W	12,840	151	5000K	70+	>200,000	120-277V	50/60HZ	250w HPS
CLP-330FAL-MD-100CLED	105W	14,340	136	5000K	70+	>200,000	120-277V	50/60HZ	400w PSMH
CLP-330FAL-MD-120CLED	125W	18,104	144	5000K	70+	>200,000	120-277V	50/60HZ	400w HPS
CLP-330FAL-MD-150CLED	155W	20,680	133	5000K	70+	>200,000	120-277V	50/60HZ	400w HPS
CLP-330FAL-LG-200CLED	205W	31,140	151	5000K	70+	>200,000	120-277V	50/60HZ	750w PSMH
CLP-330FAL-LG-250CLED	250W	36,125	144	5000K	70+	>200,000	120-277V	50/60HZ	1000w MH
CLP-330FAL-LG-300CLED	310W	41,360	133	5000K	70+	>200,000	120-277V	50/60HZ	1000w HPS

All products are proudly manufactured and/or assembled in the USA

CLP-330FAL Series



Crystal Lighting Corp.

13182 Flores St,

Santa Fe Spring, CA 90670

Ph: 562-944-0223 Fax: 562-944-0225

[www.crystallighting.us](http://www.crystallighting.us)

All products are proudly manufactured and/or assembled in the USA