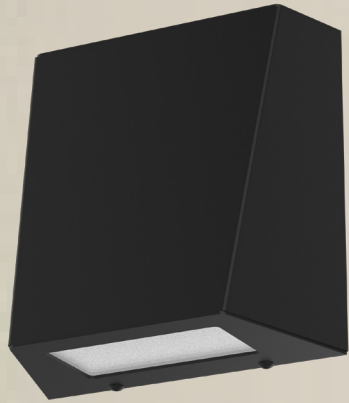


CL-nv3031  
Wall Pack LED Luminaire  
DESIGN-FUNCTION-QUALITY



*Crystal Lighting Corp.*



CL-NV3031 Architectural Full Cut Off LED Wall Pack Luminaire, Perfect for lighting up Residential Exteriors, Walkways, Entry Ways, Perimeters, Parking Garages, School Campuses, and others Industrial or Commercial Spaces. CL-NV3031 is 100% manufactured in the USA.

- Dark sky compliant and up light option.
- Ten year/100,000 hour limited warranty.

**Features**

**•ADA Compliant.**

Energy Savings: Over 66% compared to HID light sources

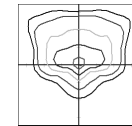
- Improved lumen maintenance
- Utilizes high efficient Lumiled LED's
- Operating temperatures: -30°C ~ 60°C
- Driver: Constant current, 120-277v, 50/60Hz.
- Suitable for wet locations
- 0-10 Dimming Driver, Occupancy Sensors or PhotoCell (optional)

**Construction**

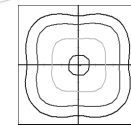
- Housing is heavy-Gauge Aluminum
- 3 Mil Powder Coat Finish.
- Frosted Acrylic Lens (Standard)
- Silicone Gasket to prevent leakage and provide weather-tight protection.
- Mounting: Over 4" "J" Box.



**OPTIC DISTRIBUTION**



TYPE 4 (T4)



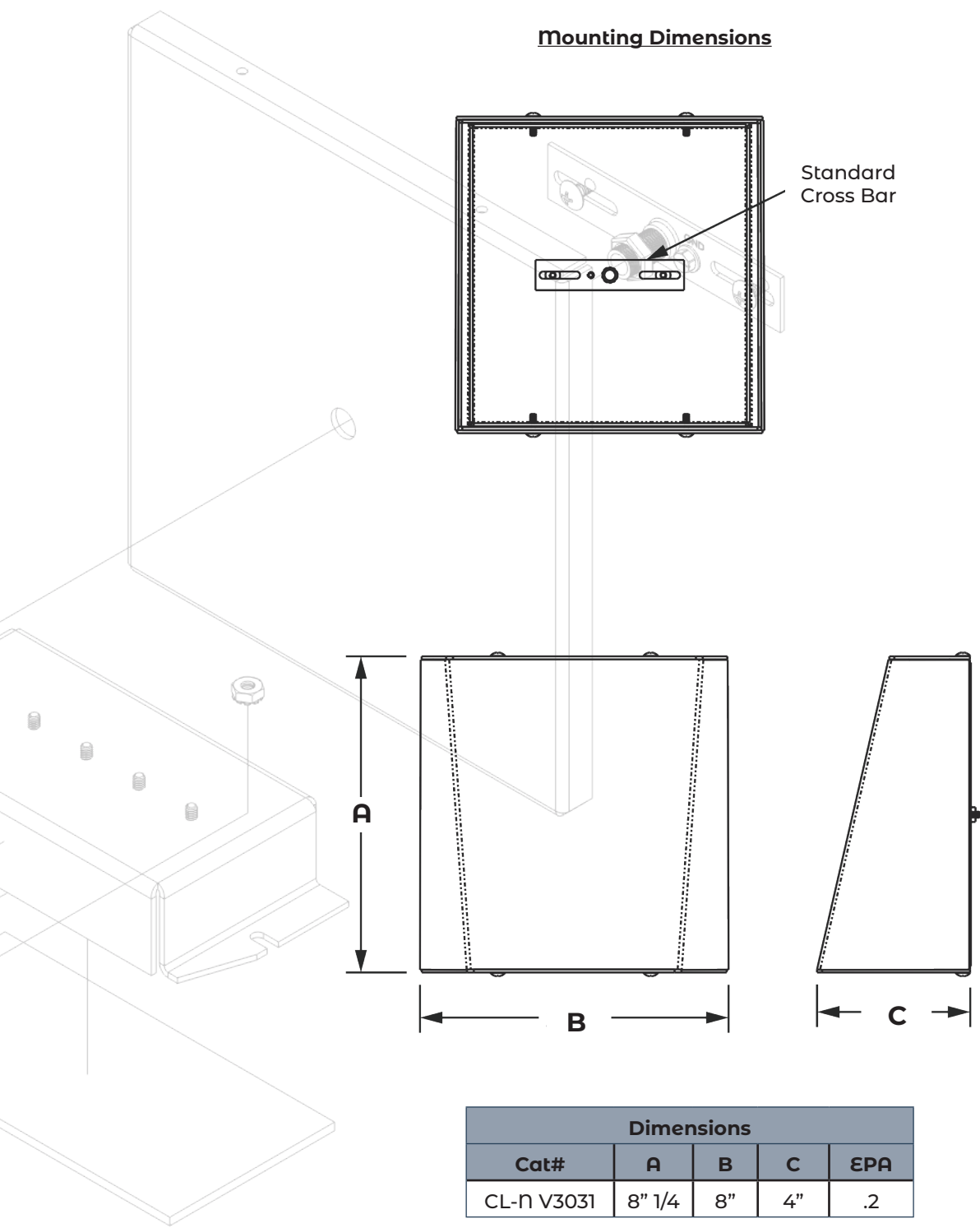
TYPE 5 (T5)

Example: CL-NV3031-20CLEd-T5-40K-MV-BZ-PC



Cat #	Wattage	Light Dist.	Color Temp.	Voltage	Finish	Options
CL-NV3031	10W (10CLEd)	Type 4 (T4)	3000K (30K)	120-277V (MV)	Black (BLK)	Button Photo Cell (PC)
	15W (15CLEd)	Type 5 (T5)	4000K (40K)		White (WHT)	Wireless controls (WC)
	20W (20CLEd)		5000K (50K)		Silver (SLR)	Emergency Pack (EMR)
					Bronze (BRZ)	
					Graphite (GPH)	
					Custom (CST)	

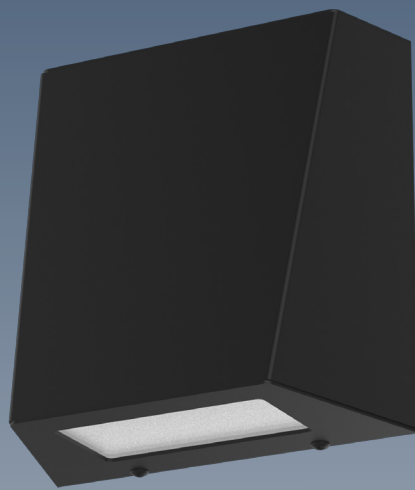
**Mounting Dimensions**



Dimensions				
Cat#	A	B	C	EPA
CL-N V3031	8" 1/4	8"	4"	.2

Cat #	Input Power	Lumen Output	LPW	Color Temp. (CCT)	CRI	Rated Life (L70)	Input Voltage	HID Equivalent
CL-NV3031-10CLED	15W	1,914	191	5000K	70+	>200,000	120-277V	50W HPS
CL-NV3031-15CLED	20W	2,754	193	5000K	70+	>200,000	120-277V	70W HPS
CL-NV3031-20CLED	25W	2,935	146	5000K	70+	>200,000	120-277V	100W HPS

Proudly Manufactured and Assembled in the USA



Crystal Lighting  
13182 Flores ST.  
Santa Fe Springs , CA. 90670  
Ph: 562-944-0223  
[www.crystallighting.us](http://www.crystallighting.us)

Proudly manufactured and assembled in the USA