

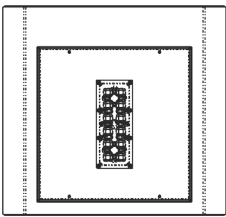
**Century** is perfect for illuminating interior locations such as: parking garages, canopies, and industrial/commercial spaces. This garage light fixture is designed for wet locations and includes a wide light distribution.  
-10 year / 100,000hrs Limited Warranty.

**Features.**

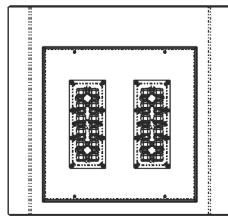
- Optical System designed for Parking Garages
- Energy Savings: Over 60% compared to HID light sources
- Improved lumen maintenance
- Utilizes high efficient Phillips Lumiled LED's
- Operating temperatures: -30°C ~ 60°C
- Driver: 0-10v dimmable, 120-277v, 50/60Hz,
- Suitable for wet locations
- Occupancy sensors and Photo Cell (Optional)
- Operating Life: 200,000 hours (L70)

**Construction.**

- Housing is formed with aluminum material
- Silicone Gasket to provide IP65 Protection
- 3mil Powder Coat (various colors available.)
- Clear Optic System
- Mounting: Mounting Directly Over a 4" "J" Box on Ceiling / Pendant Mount 12", 24" and 36" Long Stem.

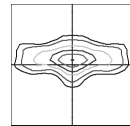


CNT-60W

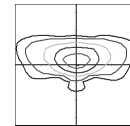


CNT-100W

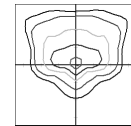
**OPTIC DISTRIBUTION**



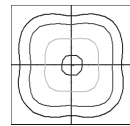
TYPE 2 (T2)



TYPE 3 (T3)



TYPE 4 (T4)



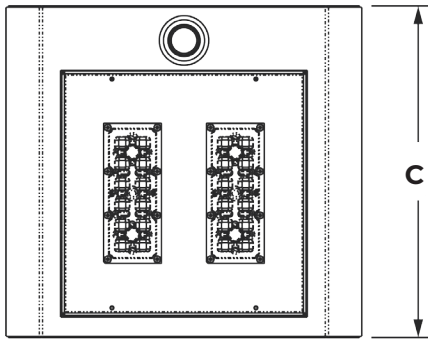
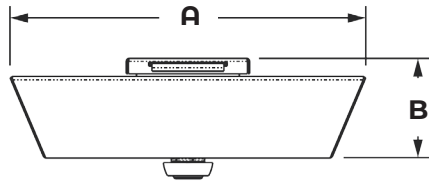
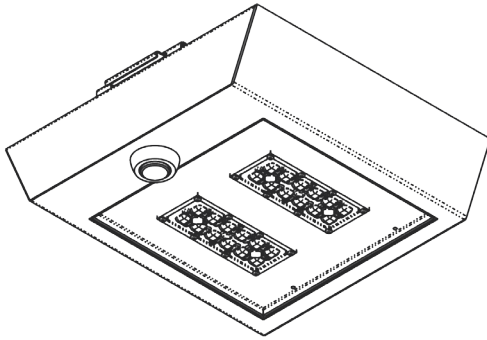
TYPE 5 (T5)

Example: CNT-20CLED-T2-40K-MV-BZ-CM-PC

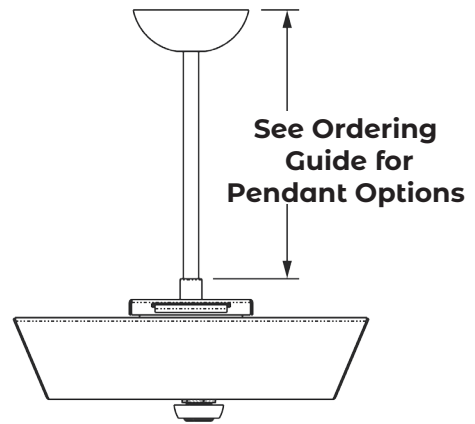
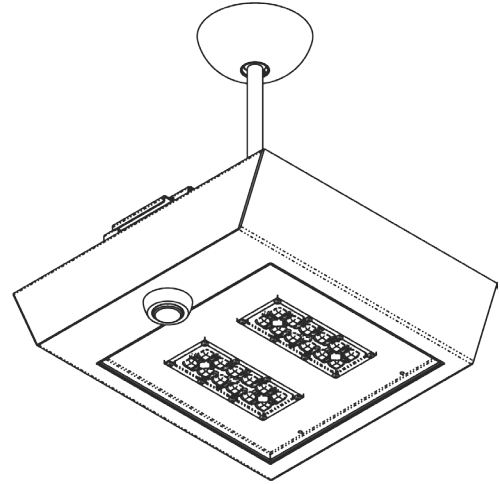


Cat #	Wattage	Light Dist.	Color Temp.	Voltage	Finish	Mounting	Options
<b>Century (CNT)</b>	20W <b>(20CLED)</b>	Type 2 <b>(T2)</b>	3000K <b>(30K)</b>	120-277V <b>(MV)</b>	Black <b>(BLK)</b>	Ceiling Mount <b>(CM)</b>	Motion Sensor <b>(OCC)</b>
	30W <b>(30CLED)</b>	Type 3 <b>(T3)</b>	4000K <b>(40K)</b>	480V <b>(HV)</b>	White <b>(WHT)</b>	Pendant Mount 12" <b>(PM12)</b>	Button Photo Cell <b>(PC)</b>
	40W <b>(40CLED)</b>	Type 4 <b>(T4)</b>	5000K <b>(50K)</b>		Silver <b>(SLR)</b>	24" <b>(PM24)</b>	Wireless controls <b>(WC)</b>
	60W <b>(60CLED)</b>	Type 5 <b>(T5)</b>			Bronze <b>(BRZ)</b>	36" <b>(PM36)</b>	Emergency Battery Pack <b>(EMR)</b>
	70W <b>(70CLED)</b>				Graphite <b>(GPH)</b>		
	80W <b>(80CLED)</b>				Custom <b>(CST)</b>		
	100W <b>(100CLED)</b>						

**CNT-CM**



**CNT-PM**



**Dimensions**

Cat#	A	B	C		EPA
CNT-CM	17" 3/8	5" 7/8	16"		.53
CNT-P12	17" 3/8	5" 7/8	16"	12"	.60
CNT-PM24	17" 3/8	5" 7/8	16"	24"	.67
CNT-PM36	17" 3/8	5" 7/8	16"	36"	.74

Cat #	Input Power	Lumen Output	LPW	Color Temp. (CCT)	CRI	Rated Life (L70)	Input Voltage	HID Equivalent
CNT-20CLED	25W	3,650	182	5000K	70+	>200,000	120-277V	50W MH
CNT-30CLED	35W	5,222	174	5000K	70+	>200,000	120-277V	70W PSMH
CNT-40CLED	45W	6,492	162	5000K	70+	>200,000	120-277V	150W HPS
CNT-60CLED	65W	8,320	132	5000K	70+	>200,000	120-277V	175W PSMH
CNT-70CLED	75W	9,986	142	5000K	70+	>200,000	120-277V	250W HPS
CNT-80CLED	85W	10,340	129	5000K	70+	>200,000	120-277V	250W MH
CNT-100CLED	105W	14,640	146	5000K	70+	>200,000	120-277V	400W PSMH

Proudly Manufactured and Assembled in the USA