

Daisy-14

Ceiling Mount LED Luminaire
DESIGN-FUNCTION-QUALITY



Crystal Lighting Corp.



Daisy-14 Luminaire is Vapor Tight, Water and Dustproof. This fixture is built using high efficiency LED strips with a Dimmable and programmable Phillips Driver, **Daisy-14** features an IP67 rated enclosure. Comes with standard Stainless Steel Hardware, Silicone Seals and Polycarbonate Frosted Lens. Great for food processing facilities, Commercial Kitchens, Breweries, Industrial Facilities, Livestock Containment Buildings, Parking Garages, Laundries, Car Washes, Underpasses, Tunnels.

-10 Year / 100,000 hour Limited Warranty.

Features

- Energy Savings: Over 66% compared to HID light sources
- Improved lumen maintenance
- Utilizes high efficient Phillips lumileds LED's
- Operating temperatures: -30°C ~ 60°C
- Driver: Constant current, 120-277v, 50/60Hz, 480v (Optional)
- Suitable for wet locations
- 0-10v dimming 80CRI (standard) up to 5000 lumen output
- Operating Life: >60,000 hours

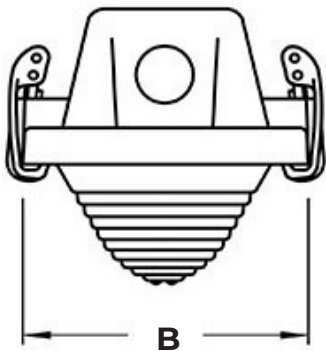
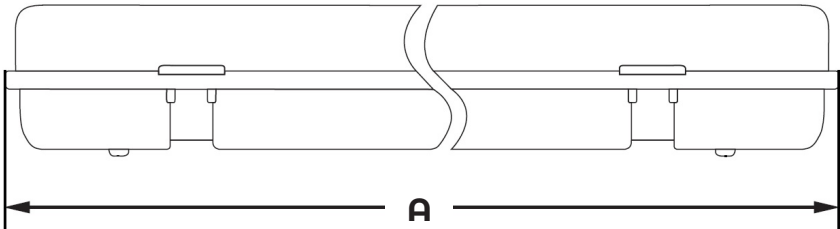
Construction

- White Polycarbonate Body with Stainless Steel Clips
- Frosted polycarbonate lens
- 1/2" rubber plugs for conduit, sensors or photo cell mounting.
- Silicone gasket to prevent leakage and provide weather-tight protection.
- Mounting: Surface mount
- UL Listed for Wet Locations



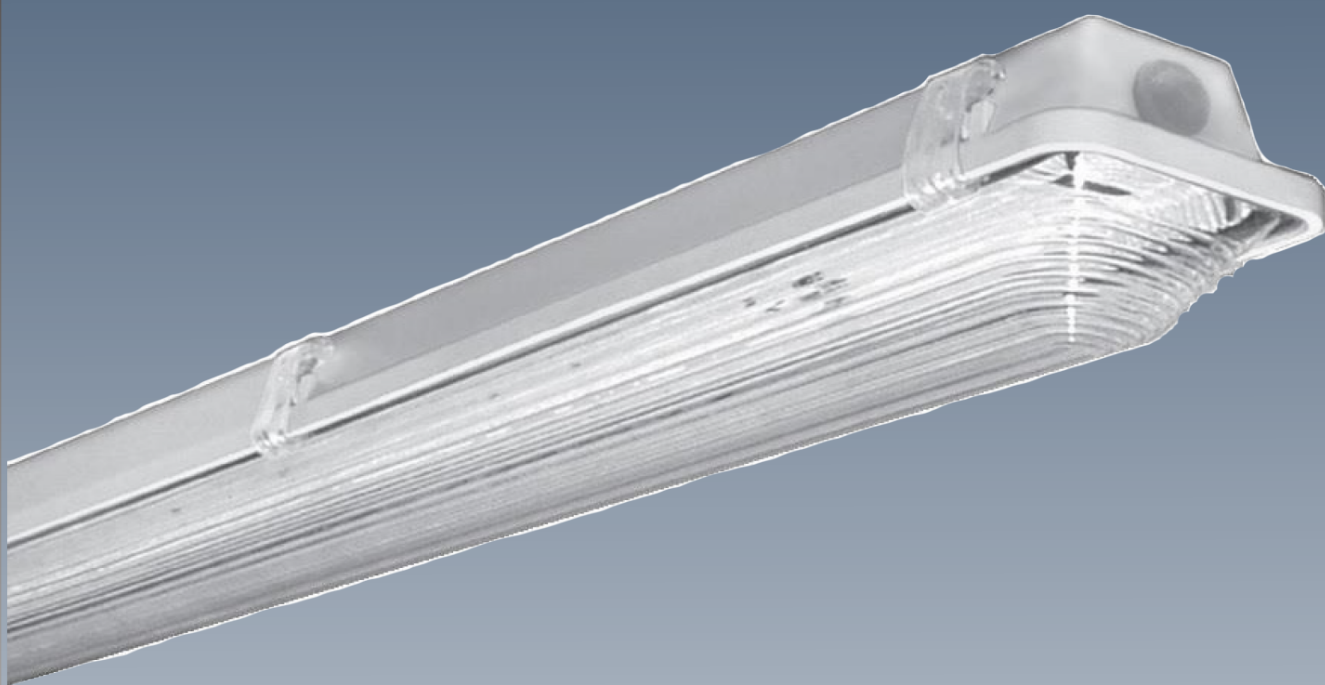
Example: DAY14-34CLEd-30K-MV-WHT-CM-PC

Cat #	Wattage	Color Temp.	Voltage	Finish	Mounting	Options
DAISY14	34W (34CLEd) 52W (52CLEd)	3000K (30K) 4000K (40K) 5000K (50K)	120-277V (MV)	White (WHT)	Ceiling Mount (CM)	Motion Sensor (OCC) Button Photocell (PC) Emergency Batt. Pack (EMR) Wireless Control (WC)



Dimensions		
Cat#	A	B
DAY14	50"	4" 1/8

Cat #	Input Power	Lumen Output	LPW	Color Temp. (CCT)	CRI	Rated Life (L70)	Input Voltage	Flourescent Equivalent
DAY14-34CLED	40W	4,120	103	5000K	70+	>200,000	120-277V	2-23W T8
DAY14-52CLED	56W	5,545	106	5000K	70+	>200,000	120-277V	3-32W t8



Crystal Lighting
13182 Flores ST.
Santa Fe Springs , CA. 90670
Ph: 562-944-0223
www.crystallighting.us

Proudly manufactured and assembled in the USA