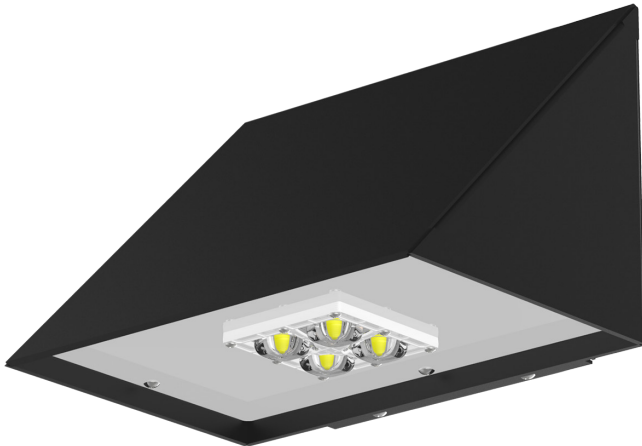


CL-2078 LED Wall pack Luminaire, Low Profile, Optical System Designed for Architectural Exterior, Walkways, Entry Ways, Industrial or Commercial Spaces. CL-2078 LED Luminaire has a wide Light Distribution.



-Dark Sky Compliant.

Warranty:

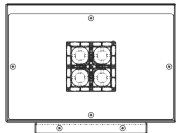
-10 year/100,000 hour Limited Warranty.

Features:

- Energy Savings: Over 66% compared to HID light sources.
- Improved Lumen Maintenance.
- Utilizes High efficient Lumiled LED's.
- Operating Temperatures: -30°C ~ 60°C.
- Driver: 120-277V (MV) or 480V (HV) (Optional).
- IP65 / IP67 Rated.
- 0-10 Dimming Driver, Microwave Sensor, Photo Cell or Wireless Controls (Optional)

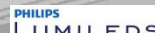
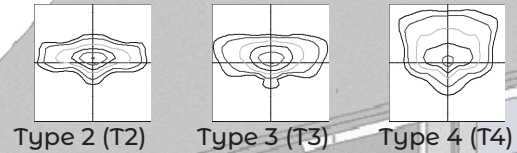
Construction:

- Corrosion-Resistant Aluminum Housing
- 3 Mil Powder Coat Finish.
- CL-Optical System IP67 Rated (Standard)
- Silicone Gasket to provide Weather-Tight Protection Enclosure (IP66 Rated).
- Mounting: Wall Mount



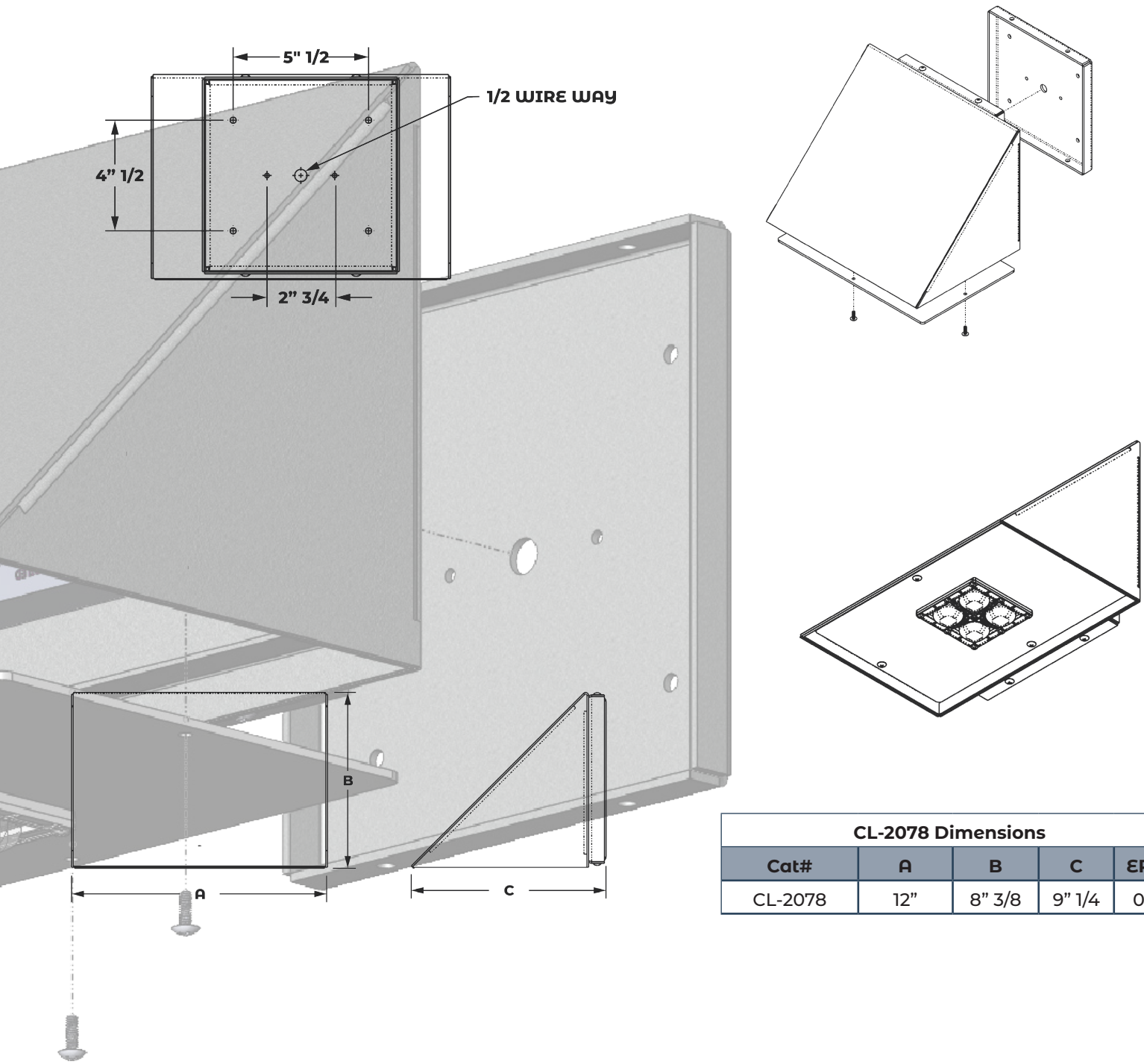
Example: CL-2078-60CLED-T2-40K-MV-BRZ-MS-PC

Optic Distribution.



CL-2078							
Cat #	Wattage	Light Dist.	Color Temp.	Voltage	Color	Mounting	Options
CL-2078	20W (20CLED) 40W (40CLED) 50W (50CLED)	Type 2 (T2) Type 3 (T3) Type 4 (T4)	3000K (30K) 4000K (40K) 5000K (50K)	120-277V (MV) 480V (HV)	Black (BLK) White (WH) Bronze (BRZ) Silver (SIL) Graphite (GPH) Marine Grade (MG)	Wall Mount (WM)	Microwave Sensor <small>(Internal)</small> (MS) Emergency Battery (EMR) Button Photo Cell (PC) Wireless controls (WC)

Mounting



CL-2078 Dimensions				
Cat#	A	B	C	EPA
CL-2078	12"	8" 3/8	9" 1/4	0.3

Cat #	Input Power	Lumen Output	LPW	Color Temp. (CCT)	CRI	Rated Life (L70)	Input Voltage	HID Equivalent	HID Equivalent
CL-2078-20CLED	25W	2,958	147	5000K	70+	>200,000	120-277V	50/60HZ	100W MH
CL-2078-40CLED	45W	5,449	136	5000K	70+	>200,000	120-277V	50/60HZ	150W MH
CL-2078-50CLED	55W	6,648	132	5000K	70+	>200,000	120-277V	50/60HZ	175W MH

Proudly Manufactured and Assembled in the USA