

# CL-2078

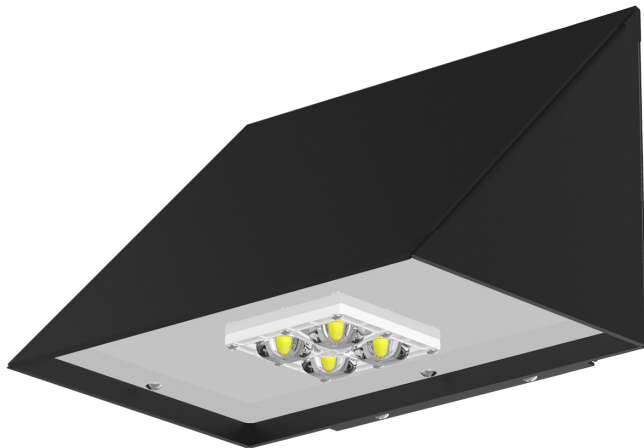
Wall Pack LED Luminaire  
DESIGN-FUNCTION-QUALITY



*Crystal Lighting Corp.*



**CL-2078** LED Wall pack Luminaire, Low Profile, Optical System Designed for Architectural Exterior, Walkways, Entry Ways, Industrial or Commercial Spaces. CL-2078 LED Luminaire has a wide Light Distribution.



-Dark Sky Compliant.

**Warranty:**

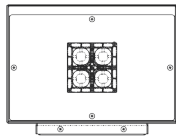
-10 year/100,000 hour Limited Warranty.

**Features:**

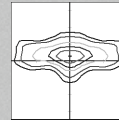
- Energy Savings: Over 66% compared to HID light sources.
- Improved Lumen Maintenance.
- Utilizes High efficient Lumiled LED's.
- Operating Temperatures: -30°C ~ 60°C.
- Driver: 120-277V (MV) or 480V (HV) (Optional).
- IP65 / IP67 Rated.
- 0-10 Dimming Driver, Microwave Sensor, Photo Cell or Wireless Controls (Optional)

**Construction:**

- Corrosion-Resistant Aluminum Housing
- 3 Mil Powder Coat Finish.
- CL-Optical System IP67 Rated (Standard)
- Silicone Gasket to provide Weather-Tight Protection Enclosure (IP66 Rated).
- Mounting: Wall Mount



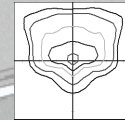
**Optic Distribution.**



Type 2 (T2)



Type 3 (T3)



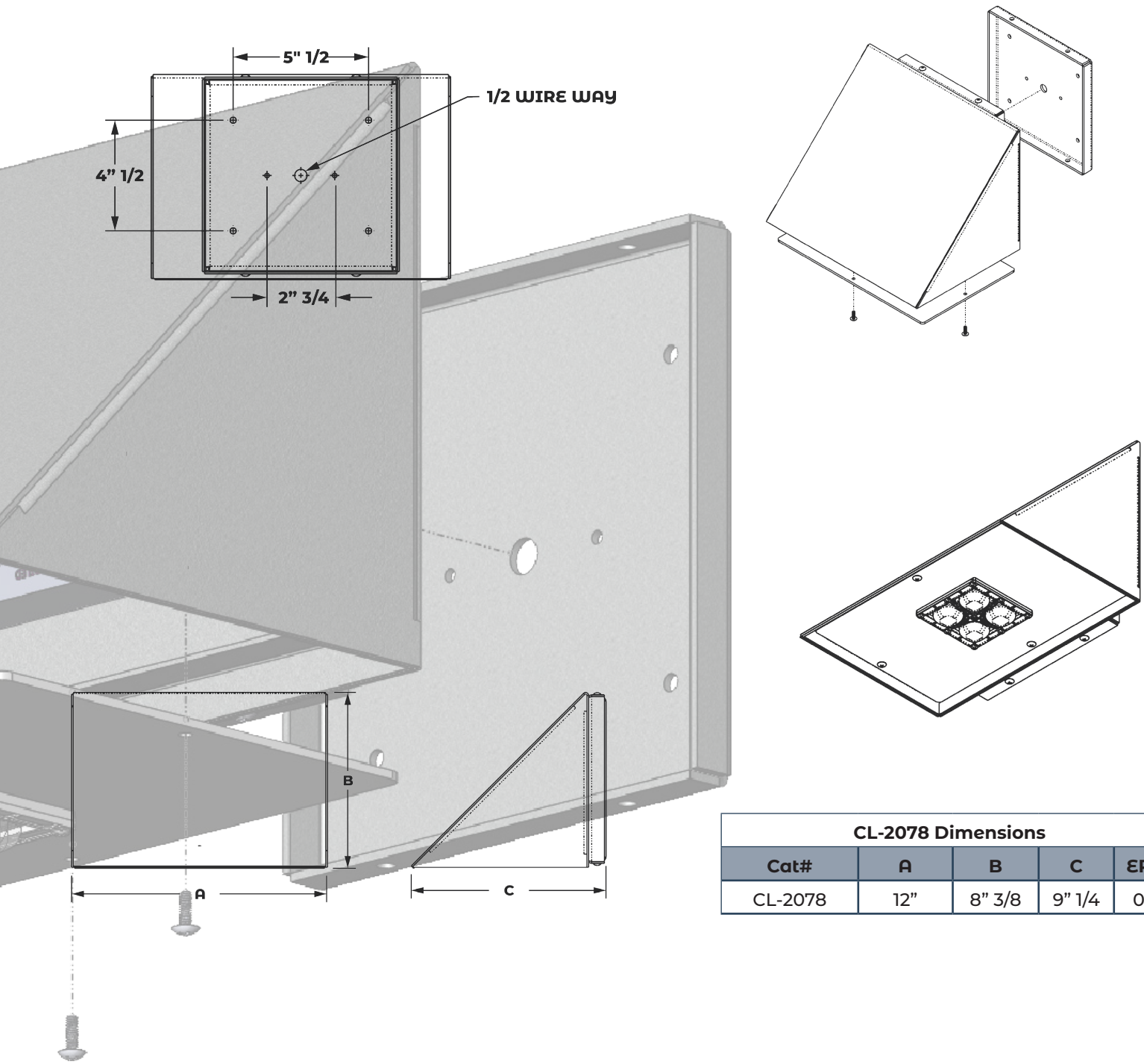
Type 4 (T4)



Example: CL-2078-60CLEd-T2-40K-MV-BRZ-MS-PC

CL-2078							
Cat #	Wattage	Light Dist.	Color Temp.	Voltage	Color	Mounting	Options
CL-2078	20W <b>(20CLEd)</b> 40W <b>(40CLEd)</b> 50W <b>(50CLEd)</b>	Type 2 <b>(T2)</b> Type 3 <b>(T3)</b> Type 4 <b>(T4)</b>	3000K <b>(30K)</b> 4000K <b>(40K)</b> 5000K <b>(50K)</b>	120-277V <b>(MV)</b> 480V <b>(HV)</b>	Black <b>(BLK)</b> White <b>(WH)</b> Bronze <b>(BRZ)</b> Silver <b>(SIL)</b> Graphite <b>(GPH)</b> Marine Grade <b>(MG)</b>	Wall Mount <b>(WM)</b>	Microwave Sensor <small>(Internal)</small> <b>(MS)</b> Emergency Battery <b>(EMR)</b> Button Photo Cell <b>(PC)</b> Wireless controls <b>(WC)</b>

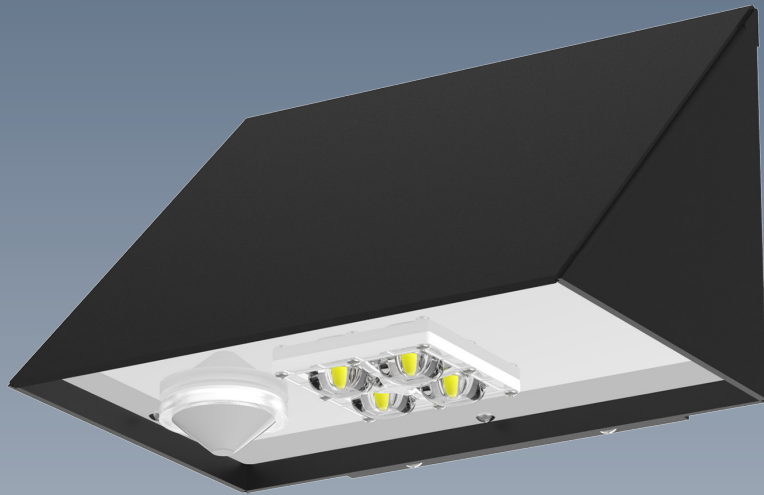
Mounting



Cat#	A	B	C	EPA
CL-2078	12"	8" 3/8	9" 1/4	0.3

Cat #	Input Power	Lumen Output	LPW	Color Temp. (CCT)	CRI	Rated Life (L70)	Input Voltage	HID Equivalent	HID Equivalent
CL-2078-20CLED	25W	2,958	147	5000K	70+	>200,000	120-277V	50/60HZ	100W MH
CL-2078-40CLED	45W	5,449	136	5000K	70+	>200,000	120-277V	50/60HZ	150W MH
CL-2078-50CLED	55W	6,648	132	5000K	70+	>200,000	120-277V	50/60HZ	175W MH

Proudly Manufactured and Assembled in the USA



Crystal Lighting  
13182 Flores ST.  
Santa Fe Springs , CA. 90670  
Ph: 562-944-0223  
[www.crystallighting.us](http://www.crystallighting.us)

Proudly manufactured and assembled in the USA

REV: 10/30/20