

CL-Product Line

Crystal Lighting Corp.





Crystal Lighting is a Light fixture Manufacturer established in 1984 by two brothers. It is a family-owned business and operated by first, second and third generations. The “Crystal Lighting” name was adopted when the company was established manufacturing crystal chandeliers, beveled glassed and brass lanterns. Crystal Lighting continued innovating and adapting to new styles of fixtures and lighting technologies, quickly outfitting our “Crystal” name however, we decided to stick with the name that started it all.

After three decades of manufacturing highly efficient indoor and outdoor light fixtures for a wide variety of markets, like most other Lighting Manufacturers, Crystal Lighting adapted the newest LED lighting technology into our traditional designs and continue to develop new products to best accommodate LED technology. We now design and develop LED solutions that deliver superior quality and the best performance the industry has to offer. Wireless Controls, Smart Sensors, POE Color- Tunable LED engines are just a few features We have adapted into Our Fixtures and Custom Retrofit kits to keep up with new technology demand.

Our goals are to design and produce highly efficient and smart light fixtures that can satisfy the most stringent requirements from Designers, Architects, and City Engineers. We follow Our founders advice to always offer the best quality and use the best components in the industry which is why we teamed with the Industry-Leading companies like Philips, Osram, Lumileds or Samsung to assure a product that will last the amount of time the technology is promised. As one of the veteran Lighting Manufacturers in the industry, we are committed to everything we do, driving us to develop and improve our products to meet the current needs of the industry for High Quality, Energy-Efficient, and Eco-Friendly Solutions.

All our products are proudly manufactured in the United States to assure quality, our products are UL and constantly adding energy efficiency certifications like DLC and energy star.

Thank you for evaluating Crystal Lighting and we are looking forward to earning the opportunity of serving our customers and their clients.

Area Lighting



EROS.

Mounting Options: Arm Mount, Slip fit, Swivel Bracket.

- 10 year/100,000 hour limited warranty.
- Housing is heavy-duty Cast Aluminum.
- 3 mil. Powder Coat Finish
- Type 2, 3, 4 and Type 5 Clear Optic.

EROS up to 200W (19,285lms)

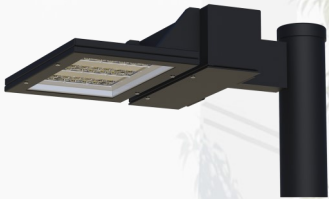


IRI-X.

mounting Options: Arm Mount, Slip fit, Swivel Bracket.

- 10 year/100,000 hour limited warranty.
- Housing is heavy-duty Cast Aluminum.
- 3 mil. Powder Coat Finish
- Type 2, 3, 4 and Type 5 Clear Optic.

IR-X1 up to 60W (8,559lms) /IR-X2 up to 120W (17,118lms) /IR-X3 up to 180W (25,677lms)



CLP-330FAL.

Mounting Options: Arm Mount, Slip fit, Swivel Bracket.

- 10 year/100,000 hour limited warranty.
- Housing is heavy-duty Cast Aluminum.
- 3 mil. Powder Coat Finish
- Type 2, 3, 4 and Type 5 Clear Optic.

CLP330FAL-S up to 60W (8,538lms) /CLP330FAL-M up to 150W (20,680lms) / CLP330FAL-L up to 300W (41,360lms)



CLP-3040.

Mounting Options: Arm Mount, Spider Mount or Yoke Mount.

- 10 year/100,000 hour limited warranty.
- Housing is heavy-duty Cast Aluminum.
- 3 mil. Powder Coat Finish
- Type 2, 3, 4 and Type 5 Clear Optic.

CLP-3040-S up to 40W (6,492lms) /CLP-3040-M up to 120W (16,980lms) / CLP3040-L up to 300W (43,620lms)



CLP-3075.

Mounting Options: Arm Mount, Spider Mount or Yoke Mount.

- 10 year/100,000 hour limited warranty.
- Housing is heavy-duty Cast Aluminum.
- 3 mil. Powder Coat Finish
- Type 2, 3, 4 and Type 5 Clear Optic.

CLP-3075 up to 120W (17,118lms)



CLP-3072.

Mounting Options: Arm Mount, Spider Mount or Yoke Mount.

- 10 year/100,000 hour limited warranty.
- Housing is heavy-duty Cast Aluminum.
- 3 mil. Powder Coat Finish
- Type 2, 3, 4 and Type 5 Clear Optic.

CLP3072 up to 120W (17,118lms)



Architectural Lighting



CLP-5001.

Mounting: Over 3" OD Options: Arm Mount, 3 Bars, 2 Side Bars.

- 10 year/100,000 hour limited warranty.
- Housing is heavy-duty Spun Aluminum.
- 3 mil. Powder Coat Finish
- Type 2, 3, 4 and Type 5 Clear Optic.

CLP-5001-S up to 70W (9,986lms) /CLP-5001-L up to 200W (26,686lms)



CLP-BELL.

Mounting Options: Arm Mount, Spider Mount, Yoke Mount.

- 10 year/100,000 hour limited warranty.
- Housing is heavy-Gauge Spun Aluminum with Cast Top.
- 3 mil. Powder Coat Finish
- Type 2, 3, 4 and Type 5 Clear Optic.

CLP-BELL-M up to 150W (19,098lms) /CLP-BELL-L up to 200W (26,686lms)



CLP-ACORN.

Mounting: Over 3" OD / Optics : Fitters, Lenses, Hard Tops and Finials.

- 10 year/100,000 hour limited warranty.
- Cast Aluminum Fitter, Acrylic or Polycarbonate Lens, Heavy Gauge Spun Hard Tops.
- 3 mil. Powder Coat Finish
- Type 3, or Type 5.

CLP-ACRN up to 70W (9,986lms)



AURORA.

Mounting Options: Arm Mount.

- 10 year/100,000 hour limited warranty.
- Housing is heavy-duty Cast Aluminum.
- 3 mil. Powder Coat Finish
- Type 2, 3, 4 and Type 5 Clear Optic.

AURORA up to 150W (19,098lms)



CLP-5000.

Mounting: Over 3" OD. / Options: Spider Mount or Yoke Mount.

- 10 year/100,000 hour limited warranty.
- Housing is heavy-duty Cast Aluminum.
- 3 mil. Powder Coat Finish
- Type 2, 3, 4 and Type 5 Clear Optic.

CLP-5001-S up to 70W (9,986lms)



CLP-MP.

Mounting Over 3" 1/2 OD.

- 10 year/100,000 hour limited warranty.
- Housing is heavy-duty Cast Aluminum.
- 3 mil. Powder Coat Finish
- Type 2, 3, 4 and Type 5 Clear Optic.

CLP-5001-S up to 30W (4,128lms)



Architectural Lighting



ODIN.

Mounting: Over 3" or 4"OD. / Optional Shades: Shade 1, 2 or 3
-10 year/100,000 hour limited warranty.
-Fitter Cast Aluminum / Shades Heavy-Gauge Spun Aluminum.
- 3 mil. Powder Coat Finish
-Light Distribution : Type 3, or Type 5.
ODN up to 100W (14,640lms)



CLP-X43.

Mounting: Over 3" OD.
-10 year/100,000 hour limited warranty.
-Housing is heavy-Duty Cast Aluminum.
- 3 mil. Powder Coat Finish
-Type 2, 3, 4 and Type 5 Clear Optic.
CLP-X43 up to 70W (9,986lms)



CLP-SOMBRERO.

Mounting: Over 3" OD / Shades : Round or Square Shades.
-10 year/100,000 hour limited warranty.
-Cast Aluminum Fitter, Acrylic or Polycarbonate Lens, Heavy Gauge Spun Hard Tops.
- 3 mil. Powder Coat Finish
-Type 3, or Type 5.
CLP-ACRN up to 70W (9,986lms)



CLP-X257.

Mounting: Over 2" 3/8, 3" OD / Pendant Stem: 1, 2, 3 or 4ft.
-10 year/100,000 hour limited warranty.
-Housing is heavy-duty Cast Aluminum.
- 3 mil. Powder Coat Finish
-Light Distribution: Type 3 or Type 5.
CLP-X257-1 up to 30W (5,222lms) / CLP-X257-2 up to 80W (10,340lms) / CLP-3040-3 up to 150 (20,680)



ASTRAL.

Optional Height: 36", 42, 6'-5", 7'-5", 8'-5", 10'-5" or 12'-5".
-10 year/100,000 hour limited warranty.
-Aluminum 6061 Alloy.
- 3 mil. Powder Coat Finish
-Type 2, 3, 4 and Type 5 Clear Optic.
AST up to 50W (4,460lms)

ASTRAL II.

Optional Height: 36", 42, 6'", 7'", 8'", 10' or 12'.
-10 year/100,000 hour limited warranty.
-Aluminum 6061 Alloy.
- 3 mil. Powder Coat Finish
-Symmetrical Light Distribution.
AST-II up to 100W (12') (14,040lms)



Architectural Lighting



CLP-X47.

Mounting: Over 3" or 4" OD.

-10 year/100,000 hour limited warranty.

-Fitter Cast Aluminum / Shades Heavy-Gauge Spun Aluminum.

- 3 mil. Powder Coat Finish

-Light Distribution : Type 2, Type 3, Type 4 or Type 5.

ODN up to 70W (9,986lms)



CLP-M58.

Mounting: Over 3" OD.

-10 year/100,000 hour limited warranty.

-Housing is heavy-Duty Cast Aluminum.

- 3 mil. Powder Coat Finish

-Type 2, 3, 4 and Type 5 Clear Optic.

CLP-M58-S up to 50W (7,778lms) /CLP-M58-L up to 100W (15,561lms)



PULSAR.

Mounting: Over 3" OD.

-10 year/100,000 hour limited warranty.

-Cast Aluminum Fitter / Heavy Gauge Spun Base and Top.

- 3 mil. Powder Coat Finish

-Light Distribution: Type 2, Type 3, Type 4 or Type 5.

PLSR-S up to 60W (8,539lms) / PLSR-I up to 100W (15,561) / PLSR-II up to 200W (26,686lms)



CLP-X50.

Mounting: Over 3" OD.

-10 year/100,000 hour limited warranty.

-Housing is heavy-duty Cast Aluminum.

- 3 mil. Powder Coat Finish

-Light Distribution: Type 3 or Type 5.

CLP-X50 up to 100W (15,561lms)



CLP-TC.

Mounting: Over 3" OD.

-10 year/100,000 hour limited warranty.

-Housing is heavy-duty Cast Aluminum.

- 3 mil. Powder Coat Finish

-Light Distribution: Type 3 or Type 5.

CLP-TC up to 100W (14,110lms)



CLP-3071.

Mounting: Over 3" OD .

-10 year/100,000 hour limited warranty.

-Cast Aluminum Fitter / Heavy Gauge Spun Base and Top.

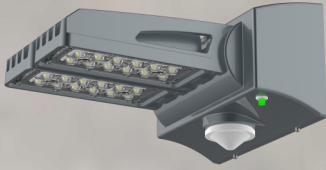
- 3 mil. Powder Coat Finish

-Light Distribution: Type 2, Type 3, Type 4 or Type 5.

PLSR-1 up to 70W (9,986lms)



Wall & Ceiling Lighting



IRI-XWM.

Mounting: Wall Mounting.

- 10 year/100,000 hour limited warranty.
- Fitter Cast Aluminum / Shades Heavy-Gauge Spun Aluminum.
- 3 mil. Powder Coat Finish
- Light Distribution : Type 2, Type 3, Type 4 or Type 5.

IR-XWM up to 100W (14,640lms)



CENTURY.

Mounting: Ceiling or Pendant Mount.

- 10 year/100,000 hour limited warranty.
- Heavy-Gauge Aluminum Housing.
- 3 mil. Powder Coat Finish
- Light Distribution : Type 2, Type 3, Type 4 or Type 5.

CENTURY up to 100W (14,640lms)



CLP-3099.

Mounting: Wall Mount or Pendant Mount.

- 10 year/100,000 hour limited warranty.
- Aluminum 6061 Alloy.
- 3 mil. Powder Coat Finish
- Light Distribution: DOWN, UP/DOWN Light.

CLP-3099-4OD up to 12W (1,348lms) / CLP-3099-6OD up to 20W (2,230lms) / CLP-3099-8OD up to 50W (6,120lms)

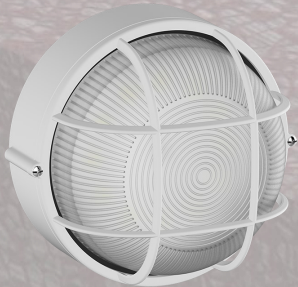


5001.

Mounting: Ceiling or Pendant Mount.

- 10 year/100,000 hour limited warranty.
- Housing is Heavy-Gauge Spun Aluminum.
- 3 mil. Powder Coat Finish
- Light Distribution: Type 2 , Type 3, Type 4 or Type 5.

5001 up to 60W (8,539lms)

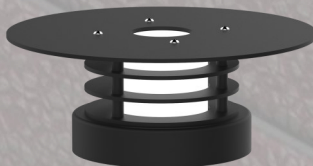


MARINE.

Mounting: Wall or Ceiling Mount.

- 10 year/100,000 hour limited warranty.
- Housing is heavy-duty Cast Aluminum.
- 3 mil. Powder Coat Finish
- Light Distribution: Type 3 or Type 5.

MARINE up to 20W (3,650lms)



ODIN-WM.

Mounting: Wall or Ceiling Mount.

- 10 year/100,000 hour limited warranty.
- Housing is heavy-duty Cast Aluminum.
- 3 mil. Powder Coat Finish
- Light Distribution: Symmetric.

ODIN-WM up to 20W (2,750lms)



Bollard



MALIBU.

Mounting: 3/8 X 12 Anchor Bolt. / Height: 42" , 36" or 24"
-10 year/100,000 hour limited warranty.
- Aluminum Shaft 6061 Alloy / Heavy Duty Cast Base .
- 3 mil. Powder Coat Finish
-Light Distribution : Type 2, Type 3, Type 4 or Type 5.
10-WM up to 30W (4,403lms)



CLP-330FAL-B.

Mounting: 3/8 X 12 Anchor Bolt. / Height: 42" , 36" or 24"
-10 year/100,000 hour limited warranty.
-Heavy-Gauge Aluminum Housing.
- 3 mil. Powder Coat Finish
-Light Distribution : Type 2, Type 3, Type 4 or Type 5.
CLP-330FAL-B up to 35W (4,608lms)



CLP-3096

Mounting: 3/8 X 12 Anchor Bolt.
-10 year/100,000 hour limited warranty.
- Cast Aluminum 356 Alloy Base.
- 3 mil. Powder Coat Finish
-Light Distribution: Type 3 or Type 5.
CLP-3096 up to 30W (4,403lms)



ODIN-B.

Mounting: 3/8 X 12 Anchor Bolt. / Height: 42" , 36"
-10 year/100,000 hour limited warranty.
-Housing is Heavy-Gauge Spun Aluminum.
- 3 mil. Powder Coat Finish
-Light Distribution: Symmetric.
ODIN-B up to 30W (4,403lms)



Pole and Decorative Base

Steel or Aluminum Poles.
Round or Square



RSA



SSA



RSS



SSS

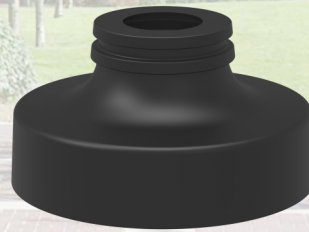
Decorative Bases



DB01



DB02



DB03



DB04



DB05



DB06



CLP-M86



CLP-M40



Decorative Arms



DB01



DB02



DB03



DB04



DB05



DB06



CLP-M86



CLP-M40



DB05



DB06



CLP-M86



Inline , Cross and Bull Horn Arms

INLINE and CROSS ARMS (Over Round or Square Pole or Tenon)



SCAR-D



SCAR-T



SCAR-OD



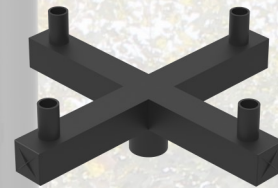
SCAR-D90



SCAR-T120



SCAR-T90



SCAR-OD

BULL HORN ARMS



BHR-D180



BHR-T180



BHR-T120



BHR-OD

SLIP FIT ADAPTERS (Over Round or Square Pole or Tenon)



SFAR-SGL



SFAR-D180



SFAR-D90



SFAR-T90



SFAR-T120



SFAR-OD



BANNER ARMS





Crystal Lighting Corp.
13182 Flores St,
Santa Fe Springs, CA 90670
Ph: 562-944-0223
Fax: 562-944-0225
www.crystallighting.us

All products are proudly manufactured and/or assembled in the USA

Rev: 11/12/2020