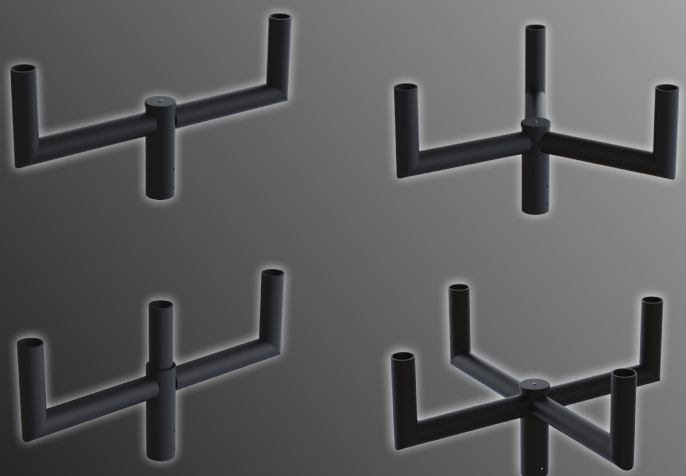


CLP-Bull Horn Arms
DESIGN-FUNCTION-QUALITY



Crystal Lighting Corp.



Bull Horn Round are constructed with Rugged Steel. Arms length available at 10", 15" and 24" Long, Mounting over 2" 3/8, 3", 3 1/2, 4", 4 1/2 or 5" O.D, Standard Finish Bronze.

BHR-D180



BHR-T180



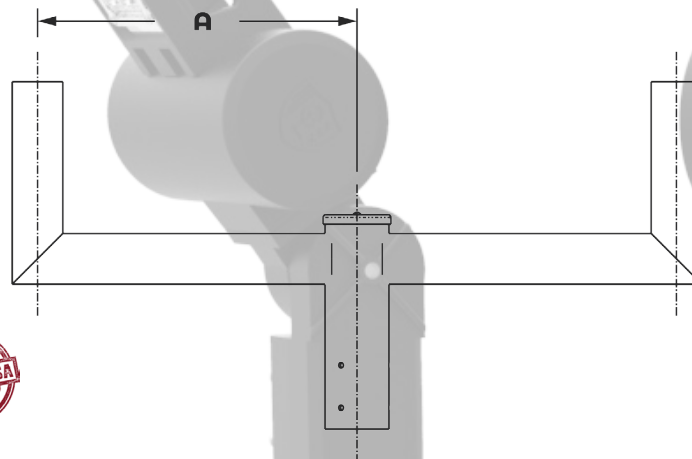
BHR-T120



BHR-Q90



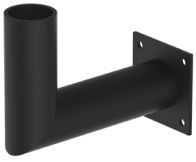
Cat#	EPA
BHR-D180-15	.97
BHR-T180-15	1.14
BHR-T120-15	.85
BHR-Q90-15	1.14
BHR-D180-24	1.26
BHR-T180-24	1.44
BHR-T120-24	1.07
BHR-Q90-24	1.44



Example: BHR-D180-15-238-BRZ

Cat #	Dimension Tenon- Tenon (A)	Mounting Over	Finish
BHR-D180 (BHR-D180)	15" (15)	2" 3/8 OD (23)	Black (BLK) White (WHT)
BHR-T180 (BHR-T180)	24" (24)	3" OD (3)	Silver (SLR) Bronze (BRZ)
BHR-T120 (BHR-T120)		3" 1/2 OD (312)	Graphite (GPH)
BHR-Q90 (BHR-Q90)		4" OD (4)	Marine Grade (MG)
		5" OD (5)	Custom (CST)

90-WMB



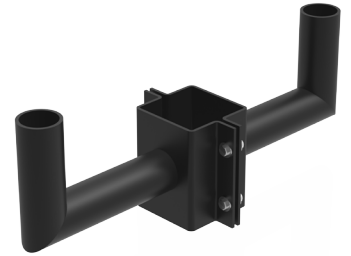
BH-WM



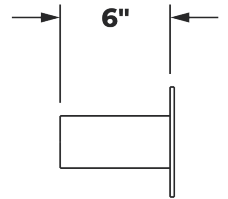
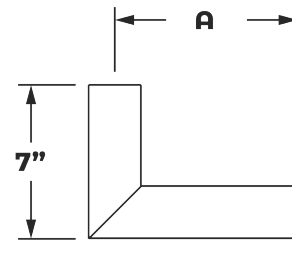
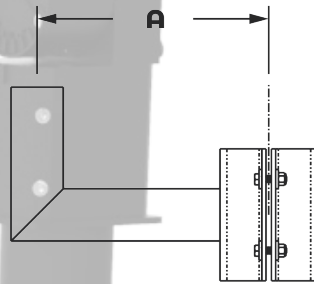
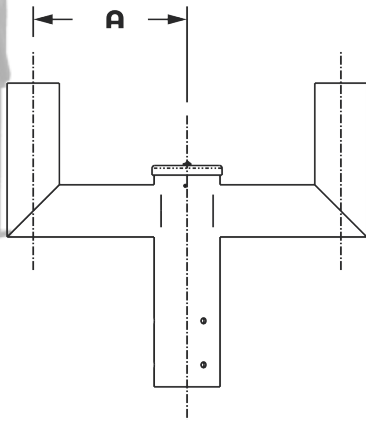
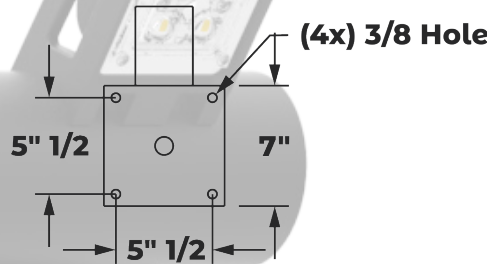
BH-PM



BH-SPCM Square Poles
BH-RPCM Square Poles



Wall Mount Plate



Example: BH-WM-10-SGL-BRZ)

Cat #	Dimension Tenon- Tenon (A)	Mounting Over	Pole Dim. (Mount Over)	Finish
90° Wall Mount Bull Horn (90-WMB)	10" (10)	90-WMB Single (SGL)	Wall Mount (WM)	Black (BLK)
Bull Horn Wall Mount (BH-WM)	15" (15)	BH-WM Single (SGL)	—	White (WHT)
Bull Horn Pole Mount (BH-PM)	24" (24)	BH-PM Single (SGL) Double (D180) Triple 90° (T90) Triple 120 (T120)	2 3/8" (238) 3" (3) 4" (4) 5" (5) 6" (6)	Silver (SLR) Bronze (BRZ) Graphite (GPH)
Bull Horn Square Pole Clamp Mount (BH-SPCM)		BH-SPCM Single (SGL) Double (D180)		Marine Grade (MG)
Bull Horn Round Pole Clamp Mount (BH-RPCM)		BH-RPCM Single (SGL) Double (D180)		Custom (CST)



Crystal Lighting
13182 Flores ST.
Santa Fe Springs , CA. 90670
Ph: 562-944-0223
www.crystallighting.us

Proudly manufactured and assembled in the USA